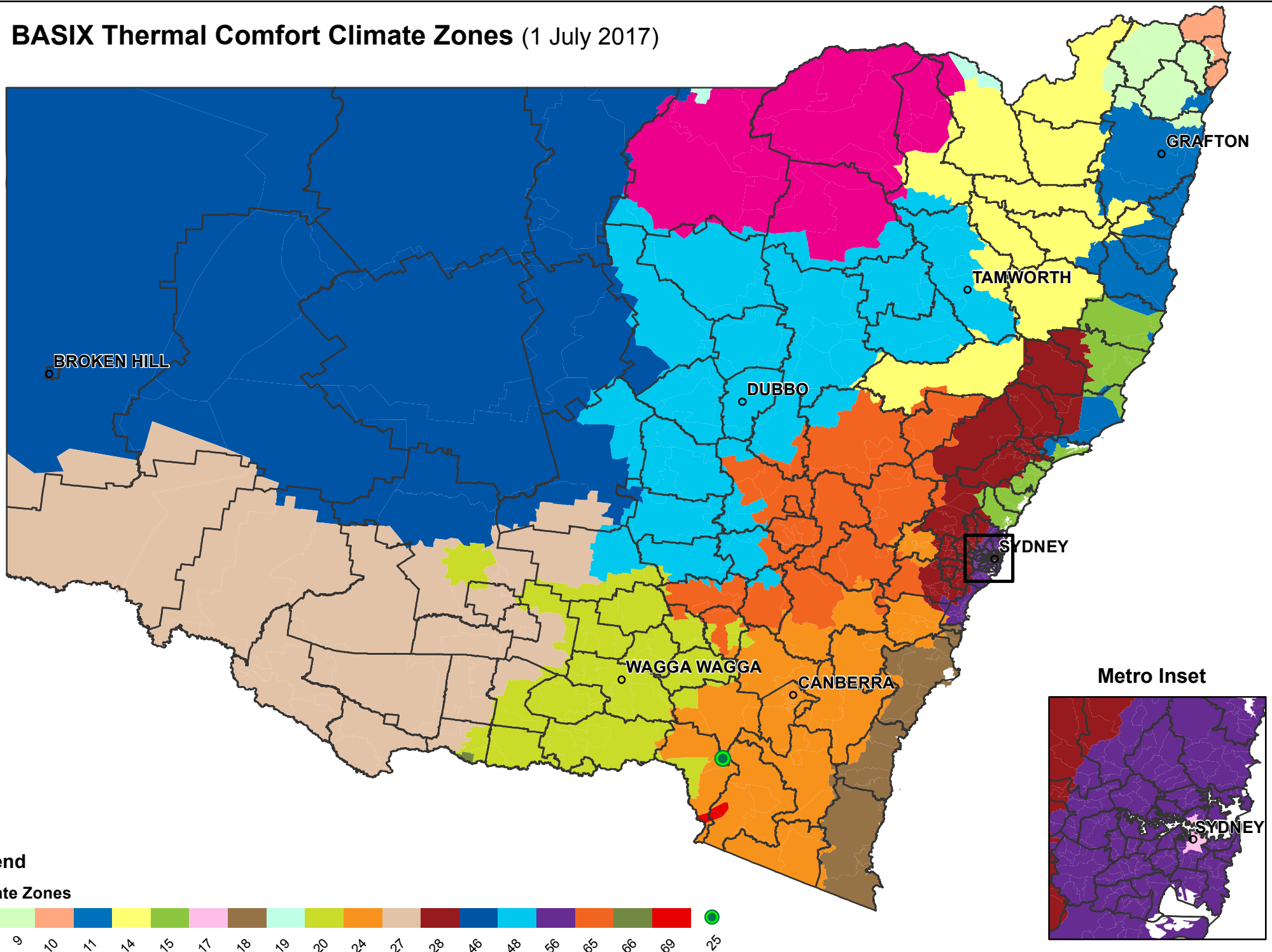


# BASIX Thermal Comfort Climate Zones (1 July 2017)



## BASIX Thermal Comfort heating and cooling caps (Software version Darwinia v3.x 1 July 2017)

| Primary Climate zone (see map) | Region        | heating (MJ/m <sup>2</sup> /year) |   |       |                         |   |       | cooling (MJ/m <sup>2</sup> /year) |   |        |                         |   |        |
|--------------------------------|---------------|-----------------------------------|---|-------|-------------------------|---|-------|-----------------------------------|---|--------|-------------------------|---|--------|
|                                |               | Average caps                      |   |       | Individual caps         |   |       | Average caps                      |   |        | Individual caps         |   |        |
|                                |               | Concrete slab-on-ground           | Suspended floor (enclosed or open) & mudbrick walls | Unit  | Concrete slab-on-ground | Suspended floor (enclosed or open) & mudbrick walls | Unit  | Concrete slab-on-ground           | Suspended floor (enclosed or open) & mudbrick walls | Unit   | Concrete slab-on-ground | Suspended floor (enclosed or open) & mudbrick walls | Unit   |
| 8                              | Moree         | 46.4                              | 51.1  | 46.4  | 46.4                    | 51.1  | 52.6  | 72.5                              | 80.0  | 72.5   | 72.5                    | 80.0  | 82.3   |
| 9                              | Amberley      | 25.0                              | 27.4  | 25.0  | 25.0                    | 27.4  | 27.8  | 64.8                              | 69.5  | 64.8   | 64.8                    | 69.5  | 72.3   |
| 10                             | Byron         | 17.5                              | 21.1  | 17.5  | 17.5                    | 21.1  | 19.3  | 40.3                              | 40.6  | 40.3   | 40.3                    | 40.6  | 44.4   |
| 11                             | Coffs Harbour | 24.5                              | 29.4  | 24.5  | 24.5                    | 29.4  | 27.3  | 33.7                              | 33.7  | 33.7   | 33.7                    | 33.7  | 37.6   |
| 14                             | Armidale      | 141.1                             | 150.5   | 141.1 | 141.1                   | 150.5   | 162.8 | 27.8                              | 31.2  | 27.8   | 27.8                    | 31.2  | 32.1   |
| 15                             | Newcastle     | 54.0                              | 59.7  | 54.0  | 54.0                    | 59.7  | 61.5  | 32.0                              | 33.3  | 32.0   | 32.0                    | 33.3  | 36.4   |
| 17                             | Sydney CBD    | 25.0                              | 26.8  | 25.0  | 25.0                    | 26.8  | 28.1  | 28.2                              | 30.8  | 28.2   | 28.2                    | 30.8  | 31.8   |
| 18                             | Nowra         | 73.5                              | 78.4  | 73.5  | 73.5                    | 78.4  | 84.7  | 31.5                              | 34.6  | 31.5   | 31.5                    | 34.6  | 36.3   |
| 19                             | Charleville   | 25.0                              | 27.4  | 25.0  | 25.0                    | 27.4  | 27.8  | 64.8                              | 69.5  | 64.8   | 64.8                    | 69.5  | 72.3   |
| 20                             | Wagga         | 127.9                             | 140.7   | 127.9 | 127.9                   | 140.7   | 146.6 | 50.0                              | 55.0  | 50.0   | 50.0                    | 55.0  | 57.3   |
| 24                             | Canberra      | 179.9                             | 191.2   | 179.9 | 179.9                   | 191.2   | 205.7 | 36.0                              | 38.3  | 36.0   | 36.0                    | 38.3  | 41.2   |
| 25                             | Cabramurra    | 454                               | 499.4   | 454   | 454                     | 499.4   | 513   | no cap                            | no cap  | no cap | no cap                  | no cap  | no cap |
| 27                             | Mildura       | 78.7                              | 87.0  | 78.7  | 78.7                    | 87.0  | 89.8  | 64.2                              | 64.4  | 64.2   | 64.2                    | 64.4  | 73.1   |
| 28                             | West Sydney   | 55.7                              | 61.8  | 55.7  | 55.7                    | 61.8  | 63.2  | 56.2                              | 61.8  | 56.2   | 56.2                    | 61.8  | 63.7   |
| 46                             | Cobar         | 51.4                              | 56.5  | 51.4  | 51.4                    | 56.5  | 58.5  | 63.5                              | 70.2  | 63.5   | 63.5                    | 70.2  | 72.4   |
| 48                             | Dubbo         | 88.4                              | 97.2  | 88.4  | 88.4                    | 97.2  | 100.9 | 45.5                              | 50.1  | 45.5   | 45.5                    | 50.1  | 52.0   |
| 56                             | East Sydney   | 40.0                              | 47.8  | 40.0  | 40.0                    | 47.8  | 45.4  | 26.0                              | 26.7  | 26.0   | 26.0                    | 26.7  | 29.5   |
| 65                             | Orange        | 262.4                             | 275.6   | 262.4 | 262.4                   | 275.6   | 295.8 | 25.0                              | 26.2  | 25.0   | 25.0                    | 26.2  | 28.1   |
| 66                             | Ballarat      | 179.9                             | 191.2   | 179.9 | 179.9                   | 191.2   | 205.7 | 36.0                              | 38.3  | 36.0   | 36.0                    | 38.3  | 41.2   |
| 69                             | Thredbo       | 387                               | 425.7   | 387   | 387                     | 425.7   | 438.9 | no cap                            | no cap  | no cap | no cap                  | no cap  | no cap |